



**Nurses: Stacey Wood and Glenda Gallegos**

## Swine Flu (H1N1) / Everyday Heroes

To date, we've had two confirmed cases of H1N1 in the county with no new confirmed cases in the past several months. This is according to Bonnie Koehler from the Delta County Health Department. We are working with the Health Department on guidelines for different levels of readiness in our school system much like the crisis alerts: yellow, orange, red. Mainly, we are attempting to find the right number or percentage as to when, if ever, we close a school. It is not an easy decision. Right now, we are looking at a 25% to 30% range of students or about the same percentage of staff with the flu-like symptoms. The percentage has not been finalized.

Just having symptoms of influenza and a doctor's suggestion that it might be H1N1 isn't enough to confirm the case. These cases must be lab confirmed, thus the person must be hospitalized due to the severity of the symptoms AND test positive for Influenza A in order to be tested for H1N1 and receive a lab confirmation.

**HERE IS WHAT WE CAN SHARE WITH PARENTS:** We can say that influenza-like illness is circulating in the schools and that we are taking proactive steps in terms of hand hygiene and encouraging students with influenza-like illness to stay home.

Closing a school is a big issue and not to be taken lightly. If a closure occurs it may last for up to 7 days. Length of school closure will be determined in consort with School District Officials and Health Department Officials. During closure, CDC recommended cleaning guidelines will be followed.

Recently, our principals turned in school schedules and instructional hours for our attendance report and audit. Most middle schools and high schools have some hours above the minimum: 1,080 hours per year. All elementary schools are significantly above their minimum of 990 hours. A closure for H1N1 would cause us to make up the days, at least for middle and high school buildings.

The percentage of flu-like symptoms leading up to school closure is a local decision. We have "called around" and many districts are at or near the same conclusion – when approximately one-third of students and/or staff are absent due to influenza like illness a school may be closed. Your input is welcome.

A big thanks to the school nurses, Glenda Gallegos, and Stacey Wood in working through the process. Nora O'Brien, Special Services Director, is also directly involved with this research.

In the meantime, we have asked a great deal of our secretaries and others in contacting homes. They are the heroes of this effort since each illness related absence must be recorded in an attempt to log flu-like symptoms. The main trigger question is, "Does your child have a fever?" Each call, if the child is ill, may take several minutes.

Without tracking the illness ratio, we do not have daily baseline information. Our secretaries will need to convey the message to parents that we are not attempting to be intrusive into their child's illness, but attempting to protect the health of all students.

A huge thanks to the nurses and the secretaries. One more assignment in your endless jobs.

### YOU ARE HEROES!

#### Calendar

|               |  |            |   |
|---------------|--|------------|---|
| September 29  | Public meets the Board Candidates @ Hotchkiss High School at 6:30 p.m. Sponsored by Coordinating Council | October 21 | Classified Council Meeting @ D.O. at 12:15 p.m.   |
| October 6     | Principals' Meeting @ D.O. at 8:00 a.m.  | October 22 | School Board Meeting @ DMTC-Paonia Campus 6:00 p.m. Policy Review 7:00 p.m. Regular Meeting |
| October 6     | Coordinating Council meets the School Board Candidates @ Delta Center at 5:30 p.m.                       | October 23 | Principal/Board Work Session @ DMTC at 1:00 p.m.  |
| October 6     | District Accountability @ D.O. at 6:15 p.m.  | October 24 | Principal/Board Work Session @ DMTC at 8:00 a.m.  |
| October 12/16 | Fall Break   | October 28 | Delayed Start Day   |

**Questions:** I read the grant report from last week *Mondays with Mike* and have several questions.

1. *It seemed like many of the grants were centered in the Delta community.*
  - a. It is true there were more curriculum grants in Delta than in any other community. Some of the grants had an initial qualifying criteria on free or reduced lunch percentages and/or previous achievement results on CSAP. It is especially gratifying to see the Delta Schools making solid progress on testing scores and graduation rates.
2. *Do you think that bragging about the grants might work against taxpayer support for issues like bonds?*
  - b. I am very proud of the grant record and the people that wrote the grants. You might have a point. The building grants have certainly eliminated two major projects: Garnet Mesa and Cedaredge Elementary. However, since the project at CES consumed over 20% of the bond question, taking it off the list of needed projects may help with voter support. In addition, I think the grant activity demonstrates solid stewardship of tax dollars. Only the future will tell.

\*\*\*\*\*

## **School Board Meeting September 17, 2009**

The School Board met in regular session last Thursday night at 7:00 p.m. at the Delta Center. The Board and guests honored various individuals in the "Good News Section:"

**Connie Vincent** was honored in her rapid response in applying for "Open Title I funds" Virtually, Connie and her team had 24 hours to put together a \$19K grant. The funds will be used to continue the work of the CAT and pay for their substitutes.

**Bob Marshall, Tony Bowling, and Caryn Gibson** were honored for acquiring the \$400K grant for the Paonia Campus of the Technical College.

**Senator Gail Schwartz** was given a special award for her effort in support of the BEST program in general and her promotion of the Cedaredge Elementary project specifically.

During the School Board Member Comment portion of the meeting the Board announced the following events:

- \* **Board/Principal Work Session** on October 23-24, 2009 at the Technical College.
- \* **CASB Conference** in Colorado Springs on December 3-6.
- \* **Budget Task Force** will commence a financial study in late October. Members named to the committee included: Glen Suppes, Nikki Lally, and Connie Davidson (Coordinating Council); Jackie Allinson and Debra Richards (Classified Council); Brent Curtice, Greg Figenser, and Derek Carlson (Principals). Members have not been identified for accountability and the citizens group.
- \* **Board Candidates Review** included the contested seat for District IV: Brian Cambria and Tammy Smith. District V: Betsy Marston and Chad Campbell. Cheryl Hines will represent the uncontested seat in District II. Two forums are currently scheduled on September 29 at 6:30 p.m. at Hotchkiss High School and October 6 at 5:30 p.m. at the Delta Center.
- \* **Superintendent's Report:**
  - a. **The Grant Report** was presented (see last week's *Mondays*).
  - b. **School Enrollment** projection indicates a 95 to 100 student reduction from a year ago.
  - c. **The recommended Field Trip Protocol** was reviewed by the Board. The field trip committee will consider various written suggestions this week and bring a draft policy to the October Policy Review meeting.
  - d. **Accreditation Report:** The School Board reviewed the recommended accreditation status of various school buildings. A resolution was adopted accepting the recommended categories.
  - e. **Delta County District Achievement Targets for 2009-2010** were reviewed and accepted by the Board. The objectives of the Achievement targets are to increase the percent of students growing while reducing the percentage of students losing ground on CSAP and ACT.

**The next School Board meeting is scheduled for October 22nd at the Technical College at the Paonia Campus. You are invited and encouraged to attend.**

## Working the Crowd

(Continued from last week's *Mondays*)

### ZONES OF PROXIMITY (Part of Delta County School's walk throughs on engagement)

Imagine walking among your students. Picture three *zones of proximity* surrounding your body in concentric circles. We will use the colors of a stoplight -- red, yellow, and green -- to represent those zones.

The red zone is nearest to you. Red means *stop*. Students in the red zone cool it. Outside the red zone is the yellow zone. Yellow signals *caution*. In the yellow zone, students cool it as long as you are facing in their direction, but, when your back is turned, the light turns green. Beyond the yellow zone lies the green zone -- green as in *go!* When students in the green zone look up to see that you are on the far side of the room, particularly if you are preoccupied, it can be goof-off time.

### DISRUPTING DISRUPTIONS

When you are working the crowd, two or three steps will switch a student from the green zone to the yellow zone or from the yellow zone to the red zone. Thus, through mobility, you are constantly disrupting the students' impulse to disrupt.

Of course, neither you nor the students monitor this at a conscious level. It is *subconscious* -- on the edge of awareness. Only when you watch previously well-behaved students in the classroom of a teacher who does *not* exploit proximity, do you come to appreciate the importance of *working the crowd*.

### TRIPPING OVER THE FURNITURE

Once the importance of mobility and proximity become clear, the next logical step is to make working the crowd as easy as possible. Are there obstacles that might make working the crowd difficult? Look around a typical classroom and you will see a whole room full of obstacles. The biggest impediment to working the crowd is typically the arrangement of the furniture.

\*\*\*\*\*

### EFFECTIVE ROOM ARRANGEMENT

#### The Teacher's Desk

Arrange the furniture to make working the crowd as easy as possible. Carefully analyze space, distance, and movement.

First, get your desk away from its traditional location in the front of the classroom. Why? Because it costs you almost *eight feet of proximity* with every student in the classroom! Next, bring the students forward so you can write on the board and then turn to talk comfortably to the front row.

Where should your desk go? Most teachers just shove it into the corner so they can conveniently lay things on it. Other teachers place it in the back of the room.

#### The Students' Desks

Provided in today's issue are sample room arrangements. Do not jump to the conclusion that they are "correct." They simply make mobility easy. Once you become familiar with a few basic principles, you will be able to rearrange your own classroom in away that is best for you.

The most important feature of room arrangement is not where the furniture *goes*, but, rather, where the furniture *does not go*. The objective of room arrangement is to create walkways. You want to be able to get from any student to any other student with the fewest steps possible.

#### Proximity and Supervision

The diagram pictured on the next page has four rows running from side to side, with eight students per row. Imagine yourself working the crowd during guided practice as you supervise students' work. What is the shortest distance you can walk that will allow you to read the work of every student in the class? It is indicated by the red line in the diagram. We will call this pattern of movement an *interior loop*.

(Continued on Page 4)

### Delta County School District 50J Unofficial Enrollment as of September 21, 2009

|   |             |
|---|-------------|
| Cedaredge Community even with last year (924) |             |
| Delta Community                               | -44         |
| Crawford K-8                                  | + 2         |
| Hotchkiss Community                           | + 2         |
| Paonia Community                              | <u>-38</u>  |
| Total Traditional Schools                     | -78         |
| Total Vision Program                          | <u>-55</u>  |
| <b>Total All Schools</b>                      | <b>-133</b> |

October 1st is the official count date. If a student is not in school on the 1st, they must have been in school both prior to and after the 1st.

Free and reduced meals are over 50% this fall, up from 42% last year.

### CAT Meetings this Week

Secondary and elementary school representatives will be meeting this week at the Delta Center. Each level has two days of training from 8:00 a.m. to 4:00 p.m. Ava Lanes is working with the team members on common vocabulary and indicators of success (essentials, testing, mapping, and best instructional practices) and implementation of these in the classroom.

## Thoughts and Concerns

- ◆ Our thoughts go out to **Erika Kimber**, daughter of Terry and Brenda Kimber, Business Manager at the District Office and Library Aide at Delta Middle School, who recently had surgery. We wish her a speedy recovery.
- ◆ Our thoughts go out to **Alexandra Matheson**, daughter of Belinda Matheson, aide at Crawford K-8, who was recently ill. We wish her a speedy recovery.
- ◆ Our thoughts go out to **Vicie DeLisle**, Special Education aide at Delta High School. We wish Vicie a speedy recovery.
- ◆ Our thoughts go out to the family of **Elsie Wolters**, retired teacher from Delta Middle School in the loss of Elsie.



### Effective Room Arrangement...(Continued from Page 3)

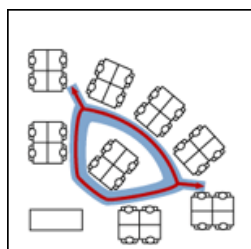
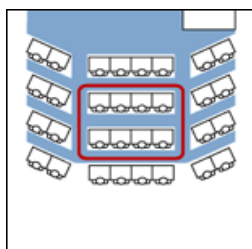
You also might wish to have students work together in small groups as in cooperative learning or committee work. The diagram to the right below shows a room arrangement in which students are working in groups of four. They may be seated at large tables, or they may have shoved their desks together.

An interior loop allows you to work the crowd with the fewest steps.

As you can see, the room arrangement to the right looks very different from that on the left. However, when you start working the crowd, you will find your *interior loop* soon enough.

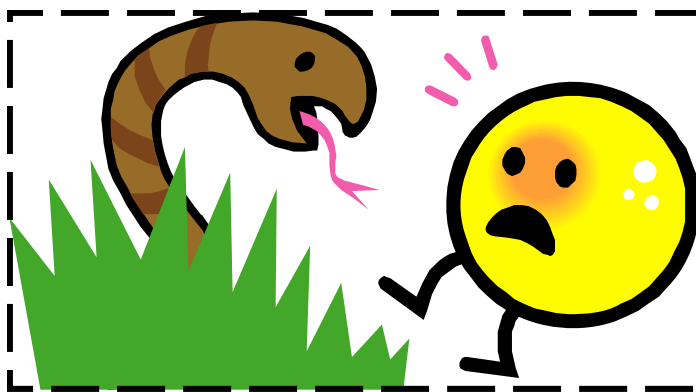
In closing, remember that both room arrangement and mobility are only means to an end. The objective of room arrangement is *proximity*. If you already have proximity without moving, you needn't go any further. For example, primary teachers might have all the proximity they need sitting on the carpet reading to students at their feet.

This article is condensed from Dr. Jones' award winning book *Tools for Teaching*. Illustrations by Brian Jones for *Tools for Teaching*.



### Flu Shot Reimbursement

To file a claim for reimbursement, save your receipt and file with our insurance company. The claim forms for Delta County School District are on our website: [www.deltaschools.com](http://www.deltaschools.com) under 'insurance'.



Welcome to Haley's new snake handling class. This is new to CES.

*The story: While giving a DIBELS test, Haley was told by a little boy there was a snake going into her classroom. This brave soul attempts to capture the snake in a wastebasket with the help of another teacher. Being unsuccessful, Haley picks up the snake and runs fast-fast-fast to the nearest door. This can now be added to Haley's resume.*